



**Omega VI replacement chassis unit** is an ideal replacement and upgrade for the old Whalen VI unit. The chassis is a direct-drop in for a fast, simple and easy installation.

The Omega replacement chassis features modern components and chassis noise cancelling base providing the user with silent, energy efficient, and reliable year-round operation.

A matching harness connector, and factory tested and fully charged with R-410A, makes Omega the preferred replacement option.

#### **QUICK & EASY**

Omega VI chassis is dimensionally identical to old Whalen VI unit for a quick and easy installation. Chassis comes with plug-n-play harness for connection to existing 6-pin, 12-pin and 15-pin electrical. Water connections match existing cabinet connections for a seamless transition.

#### **SAFETY**

Replacement chassis comes standard with high-pressure and low-pressure safety switches to protect unit due to air-flow blockages, water flow disruptions, or motor failures. Equipped with a lock-out relay to prevent the chassis from operating after a safety switch trip.

#### **COMFORT & RELIABILITY**

Quiet and reliable operation from the use of quality components and construction. High-efficient compressors and built-in noise cancelling double isolated compressor base ensure silent unit operation. Low pressure by-pass timer for fault-free start-ups and thermostatic expansion valve (TXV) for optimal operation. All new Omega units comes with our standard 1-year parts and 5-year compressor warranty.

#### **STANDARD FEATURES**

- Factory charged and tested
- High efficiency compressors
- High-pressure and low-pressure safety switches
- Noise cancelling double isolated compressor Base
- Thermostatic Expansion Valve
- R-410A Environmentally friendly refrigerant
- Refrigerant service access ports
- Heavy gauge galvanized sheet metal
- 1-Year Parts and 5-Year Compressor Warranty
- 1/2 inch hose connections
- Available in 6-pin, 12-pin & 15-pin electrical versions

#### **OPTIONS & ACCESSORIES**

- Thermostat
- Auto-Flow Balancing valve
- Auto Shut-Off Control valve
- Geothermal Option
- Epoxy Coated Air Coil for Corrosion Protection
- Hose Sets

[www.omega-heatpump.com](http://www.omega-heatpump.com)

### Performance Data

Replaces Whalen Model	Refrig.	Size (Tons)	Nominal CFM	Cooling*		Heating*		Nominal GPM	WPD	
				BTUH <sup>1</sup>	EER <sup>1</sup>	BTUH <sup>2</sup>	COP <sup>2</sup>		PSI	FT
VI-A-03 / WA-3	R-410A	3/4	310	9,900	12.6	14,100	4.4	2.5	4.3	10
VI-A-04 / WA-4	R-410A	1	475	13,000	13.3	16,600	4.4	3.0	4.5	10
VI-A-06 / WA-6	R-410A	1 1/2	600	17,600	12.1	22,600	4.2	4.5	6.9	16
VI-A-08 / WA-8	R-410A	2	800	24,200	12.9	27,400	4.3	6.0	4.1	10

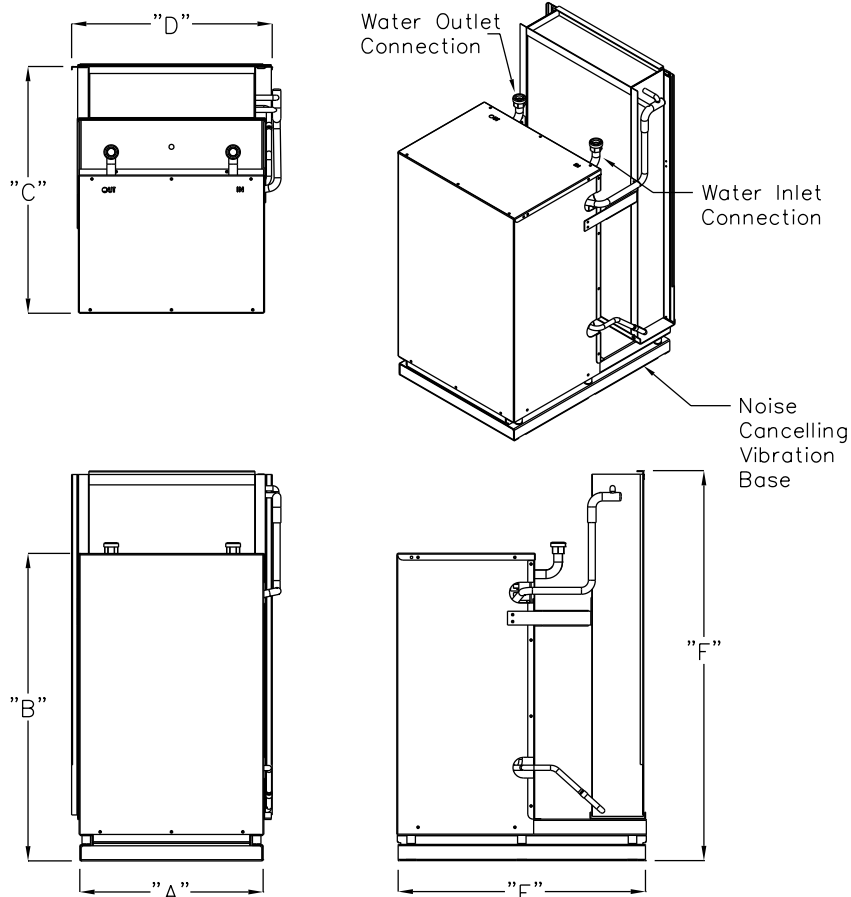
\* Nominal capacity performance based on 86F EWT Cooling, 68F EWT Heating and rated CFM. Includes fan power 0.365W/CFM

<sup>1</sup> Cooling performance based on 80F DB and 67F WB entering air conditions.

<sup>2</sup> Heating performance at 68F entering air.

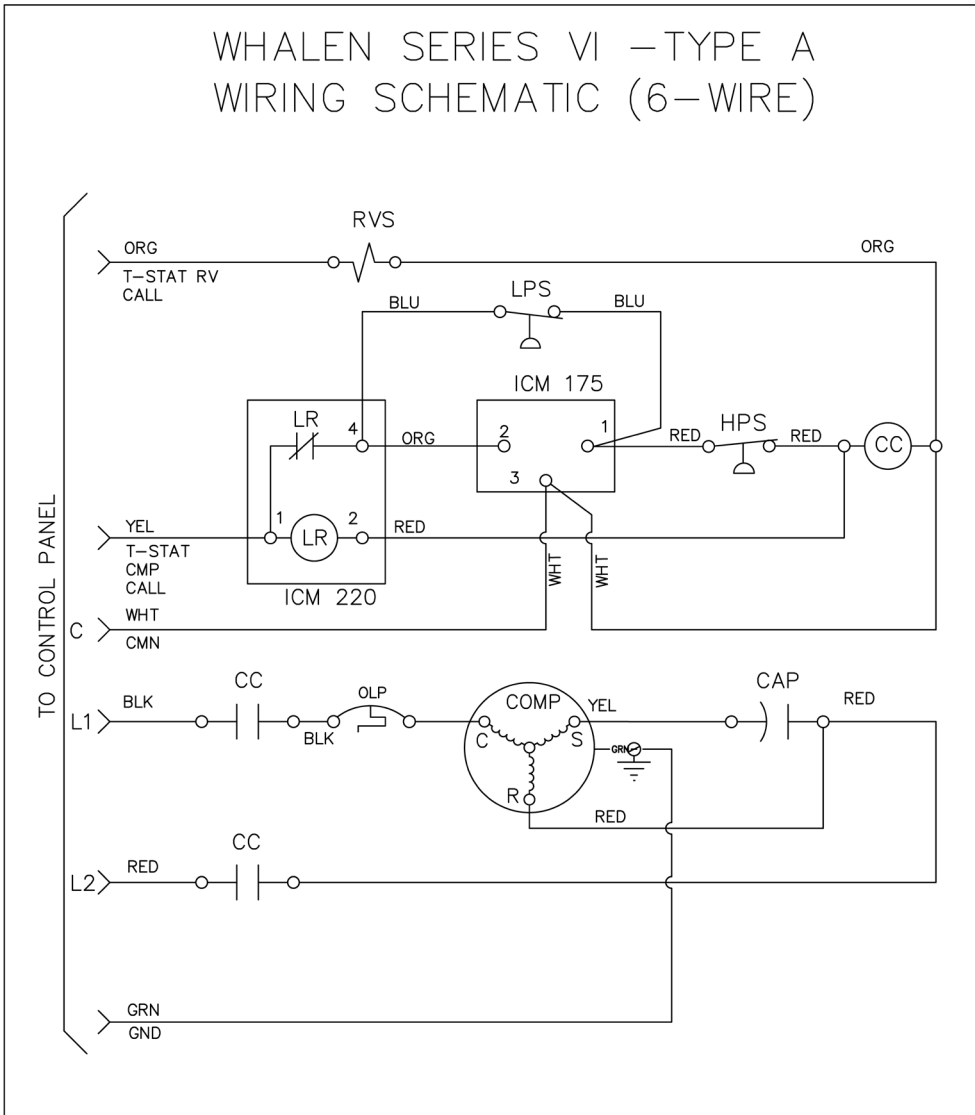
### Dimensional Data

Omega Model	Dimensions (inches)						Water Connection		Weight (lbs.)
	A	B	C	D	E	F	Outlet	Inlet	
RPC-WH-VIA-030	11 1/8	21 1/4	15	12 3/8	15	22	1/2 HA	1/2 HA	70
RPC-WH-VIA-040	11 1/8	21 1/4	15	12 3/8	15	24	1/2 HA	1/2 HA	75
RPC-WH-VIA-060	13 1/4	23 3/8	18	14 1/2	18	25	1/2 HA	1/2 HA	100
RPC-WH-VIA-080	13 1/4	24 1/8	18	14 1/2	18	25	1/2 HA	1/2 HA	115



Due to a continuous product improvement policy, dimensions and performance data are subject to change without notice.

### Wiring Schematic: Whalen 6 Pin (6-Wire) – Electromechanical Control



CMP	- Compressor
CR	- CMP Contactor Relay
HP	- High Pressure Switch
LP	- Low Pressure Switch
LR	- Lock-Out Relay
ICM	- Low-Pressure Bypass Timer
OLP	- Thermal Overload Switch
L1	- Power Line 1
L2	- Power Line 2
RV	- Reversing Valve

Low-Pressure bypass timer will bypass the low-pressure switch at unit start-up for first 3 minutes to avoid nuisance low-pressure trips.

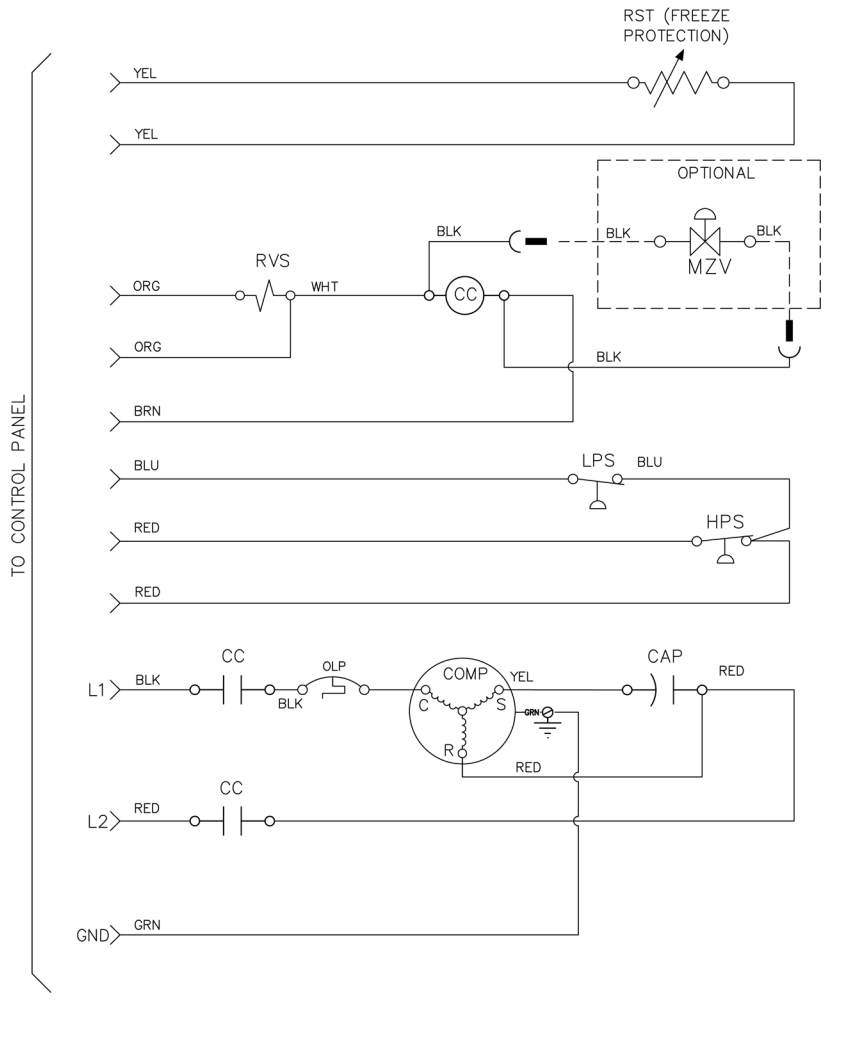
Lock-out relay: Once a safety switch is tripped, the relay will lock-out compressor operation until power is removed to unit.

HEAT/COOL Heat Pump Thermostat with compressor anti-short cycle time delay is required. Time delay setting of 6 minutes is recommended.

Reversing valve (RV) is energized in cooling mode (fails to heating mode).

### Wiring Schematic: Whalen 12 Pin - Microprocessor Control

WHALEN SERIES VI – TYPE A  
 WIRING SCHEMATIC – 12 PIN PLUG VERSION  
 208–230, 277V/1PH/60HZ



CAP	- Compressor Capacitor
COMP	- Compressor
CC	- Compressor Contactor
HPS	- High Pressure Switch
LPS	- Low Pressure Switch
LT	- Low Temp Freeze Protection
L1	- Power Line 1
L2	- Power Line 2
MZV	- Motorized Zone Valve
OLP	- Thermal Overload Switch
RVS	- Reversing Valve

### Electrical Data

Omega Model	Compressor Type	Supply Voltage	Compressor		
			QTY	RLA	LRA
RPC-WH-VIA-030	Rotary	208-230/1/60	1	@ 3.7	22.0
RPC-WH-VIA-040	Rotary	208-230/1/60	1	@ 4.7	25.0
RPC-WH-VIA-060	Rotary	208-230/1/60	1	@ 7.4	33.0
RPC-WH-VIA-080	Rotary	208-230/1/60	1	@ 10.9	62.9

**VERIFY EXISTING ELECTRICAL SERVICE IS ADEQUATE FOR NEW REPLACEMENT CHASSIS**

[www.omega-heatpump.com](http://www.omega-heatpump.com)